



## 12N100-LC

Preliminary

Power MOSFET

## 12A, 1000V N-CHANNEL POWER MOSFET

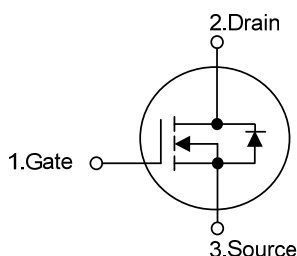
### DESCRIPTION

The UTC **12N100-LC** is a high voltage power MOSFET designed to have better characteristics, such as fast switching time, low gate charge, low on-state resistance and high rugged avalanche characteristics. This power MOSFET is usually used in high speed switching applications of switching power supplies and adaptors.

### FEATURES

- \*  $R_{DS(ON)} \leq 1.5 \Omega$  @  $V_{GS}=10V$ ,  $I_D=6.0A$
- \* Fast switching capability
- \* Avalanche energy tested
- \* Improved dv/dt capability, high ruggedness

### SYMBOL



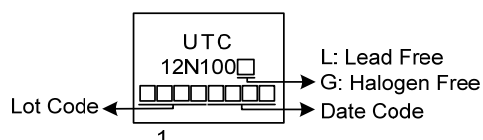
### ORDERING INFORMATION

Ordering Number		Package	Pin Assignment			Packing
Lead Free	Halogen Free		1	2	3	
12N100L-TF1-T	12N100G-TF1-T	TO-220F1	G	D	S	Tube
12N100L-TF2-T	12N100G-TF2-T	TO-220F2	G	D	S	Tube
12N100L-TF3-T	12N100G-TF3-T	TO-220F	G	D	S	Tube

Note: Pin Assignment: G: Gate D: Drain S: Source

<p>12N100G-TF1-T</p> <p>(1)Packing Type</p> <p>(2)Package Type</p> <p>(3)Green Package</p>	<p>(1) T: Tube</p> <p>(2) TF1: TO-220F1, TF2: TO-220F2, TF3: TO-220F</p> <p>(3) G: Halogen Free and Lead Free, L: Lead Free</p>
--	---

### MARKING



■ ABSOLUTE MAXIMUM RATINGS ( $T_C=25^{\circ}\text{C}$ , unless otherwise specified)

PARAMETER		SYMBOL	RATINGS	UNIT
Drain-Source Voltage		$V_{DSS}$	1000	V
Gate-Source Voltage		$V_{GSS}$	±30	V
Continuous Drain Current		$I_D$	12	A
Pulsed Drain Current (Note 2)		$I_{DM}$	24	A
Avalanche Energy	Single Pulsed (Note 3)	$E_{AS}$	360	mJ
Peak Diode Recovery dv/dt (Note 4)		dv/dt	1.75	V/ns
Power Dissipation		$P_D$	40	W
Junction Temperature		$T_J$	+150	°C
Storage Temperature		$T_{STG}$	-55 ~ +150	°C

Notes: 1. Absolute maximum ratings are those values beyond which the device could be permanently damaged.

Absolute maximum ratings are stress ratings only and functional device operation is not implied.

2. Repetitive Rating: Pulse width limited by maximum junction temperature.

3.  $L = 30\text{mH}$ ,  $I_{AS} = 4.89\text{A}$ ,  $V_{DD} = 100\text{V}$ ,  $R_G = 25\ \Omega$ , Starting  $T_J = 25^{\circ}\text{C}$

4.  $I_{SD} \leq 12\text{A}$ ,  $di/dt \leq 200\text{A}/\mu\text{s}$ ,  $V_{DD} \leq BV_{DS}$ , Starting  $T_J = 25^{\circ}\text{C}$

■ THERMAL DATA

PARAMETER	SYMBOL	RATING	UNIT
Junction to Ambient	$\theta_{JA}$	62.5	$^{\circ}\text{C}/\text{W}$
Junction to Case	$\theta_{JC}$	3.125	$^{\circ}\text{C}/\text{W}$

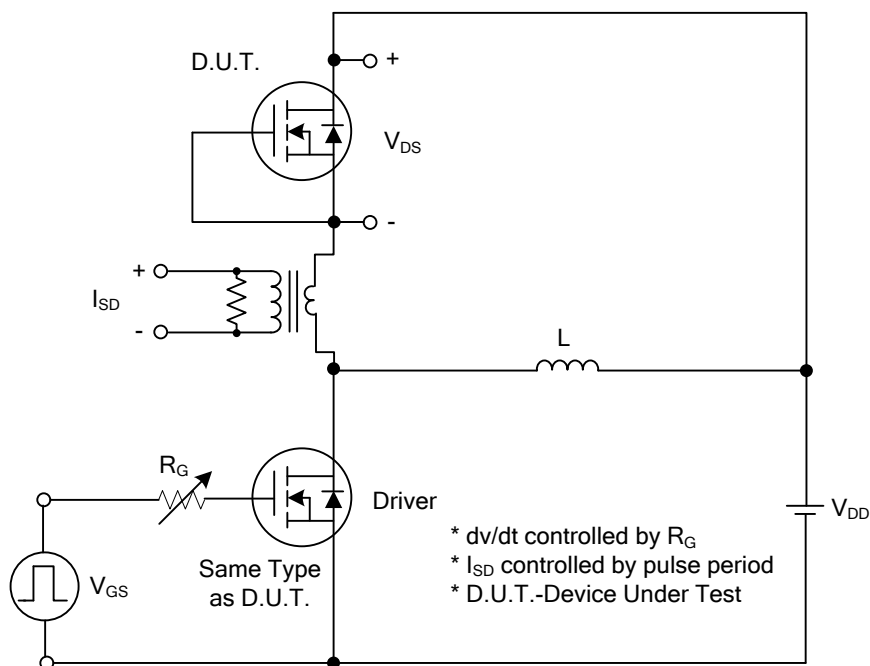
■ ELECTRICAL CHARACTERISTICS ( $T_J=25^{\circ}\text{C}$ , unless otherwise specified)

PARAMETER		SYMBOL	TEST CONDITIONS	MIN	TYP	MAX	UNIT
OFF CHARACTERISTICS							
Drain-Source Breakdown Voltage		BV <sub>DSS</sub>	V <sub>GS</sub> =0V, I <sub>D</sub> =250μA	1000			V
Drain-Source Leakage Current		I <sub>DSS</sub>	V <sub>DS</sub> =1000V, V <sub>GS</sub> =0V			10	μA
Gate- Source Leakage Current	Forward	I <sub>GSS</sub>	V <sub>GS</sub> =30V, V <sub>DS</sub> =0V			100	nA
	Reverse		V <sub>GS</sub> =-30V, V <sub>DS</sub> =0V			-100	nA
ON CHARACTERISTICS							
Gate Threshold Voltage		V <sub>GS(TH)</sub>	V <sub>DS</sub> =V <sub>GS</sub> , I <sub>D</sub> =250μA	3.0		5.0	V
Static Drain-Source On-State Resistance		R <sub>DS(ON)</sub>	V <sub>GS</sub> =10V, I <sub>D</sub> =6.0A			1.5	Ω
DYNAMIC CHARACTERISTICS							
Input Capacitance		C <sub>ISS</sub>	V <sub>DS</sub> =25V, V <sub>GS</sub> =0V, f=1.0MHz		2630		pF
Output Capacitance		C <sub>OSS</sub>			190		pF
Reverse Transfer Capacitance		C <sub>RSS</sub>			7.8		pF
SWITCHING CHARACTERISTICS							
Total Gate Charge (Note 1)		Q <sub>G</sub>	V <sub>DS</sub> =800V, V <sub>GS</sub> =10V, I <sub>D</sub> =12A I <sub>G</sub> =1mA (Note 1, 2)		60.5		nC
Gate-Source Charge		Q <sub>GS</sub>			20		nC
Gate-Drain Charge		Q <sub>GD</sub>			17		nC
Turn-On Delay Time (Note 1)		t <sub>D(ON)</sub>	V <sub>DS</sub> =100V, V <sub>GS</sub> =10V, I <sub>D</sub> =12A, R <sub>G</sub> =25Ω (Note 1, 2)		43		ns
Turn-On Rise Time		t <sub>R</sub>			25		ns
Turn-Off Delay Time		t <sub>D(OFF)</sub>			162		ns
Turn-Off Fall Time		t <sub>F</sub>			51		ns
DRAIN-SOURCE DIODE CHARACTERISTICS AND MAXIMUM RATINGS							
Maximum Body-Diode Continuous Current		I <sub>S</sub>				12	A
Maximum Body-Diode Pulsed Current		I <sub>SM</sub>				24	A
Drain-Source Diode Forward Voltage (Note 1)		V <sub>SD</sub>	I <sub>S</sub> =12A , V <sub>GS</sub> =0V			1.4	V
Reverse Recovery Time (Note 1)		t <sub>rr</sub>	I <sub>S</sub> =12A , V <sub>GS</sub> =0V		720		ns
Reverse Recovery Charge		Q <sub>rr</sub>	di/dt=100A/μs		25.6		μC

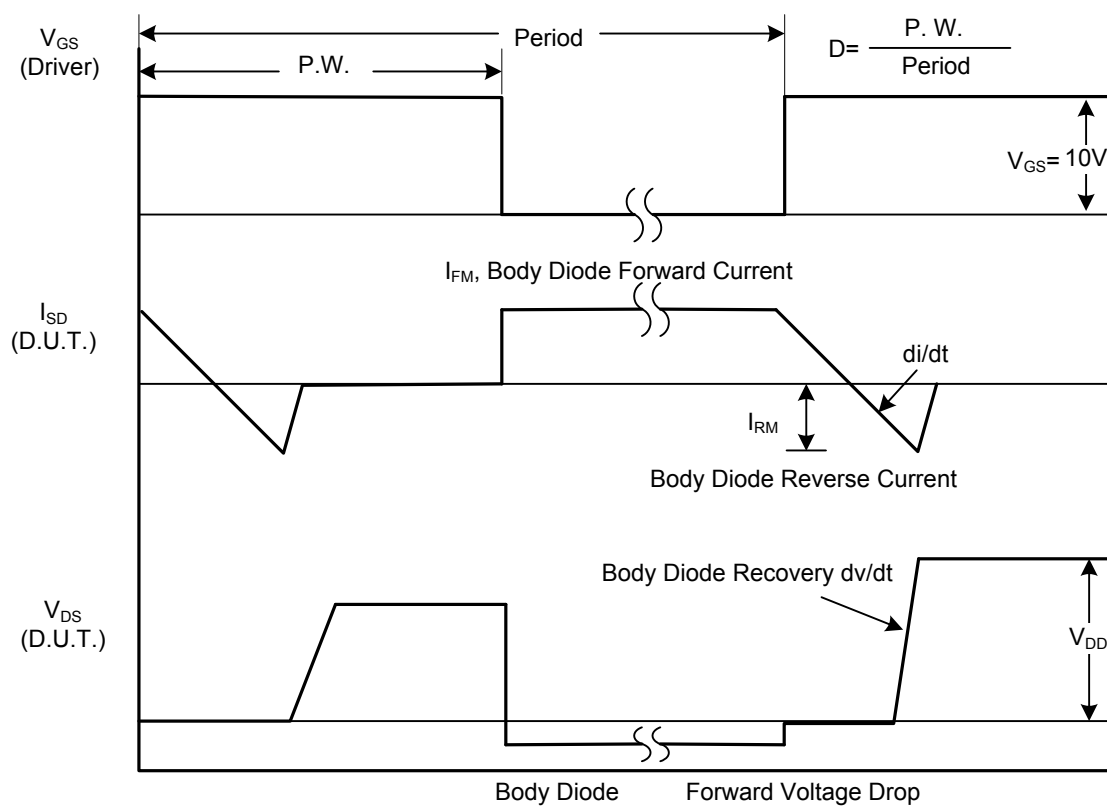
Notes: 1. Pulse Test: Pulse width  $\leq 300\mu\text{s}$ , Duty cycle  $\leq 2\%$ .

2. Essentially independent of operating temperature.

# ■ TEST CIRCUITS AND WAVEFORMS

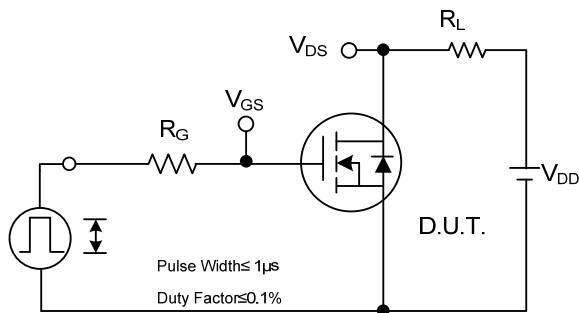


Peak Diode Recovery  $dv/dt$  Test Circuit

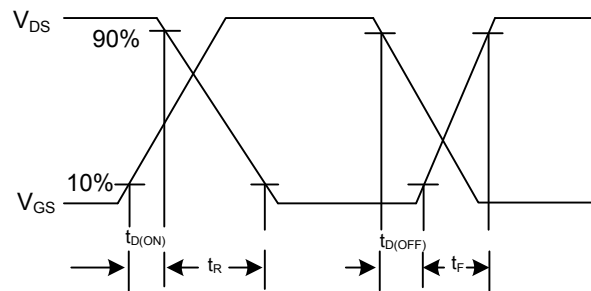


Peak Diode Recovery  $dv/dt$  Waveforms

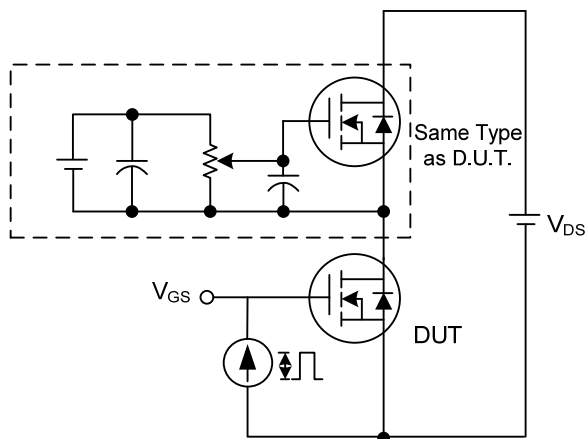
# ■ TEST CIRCUITS AND WAVEFORMS



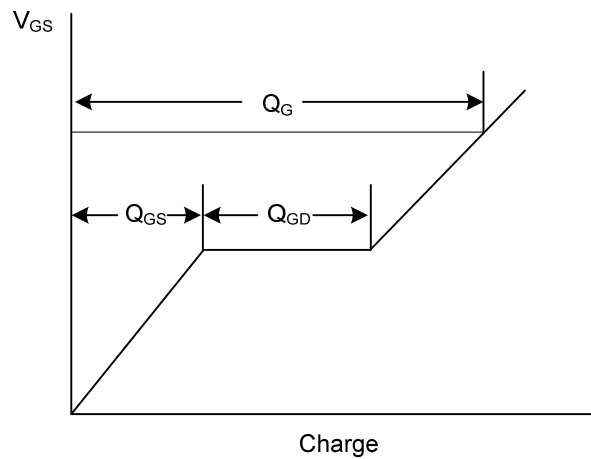
Switching Test Circuit



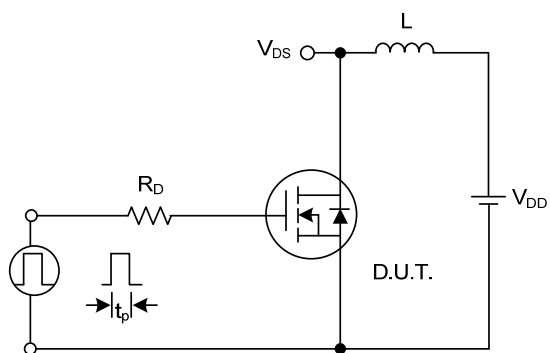
Switching Waveforms



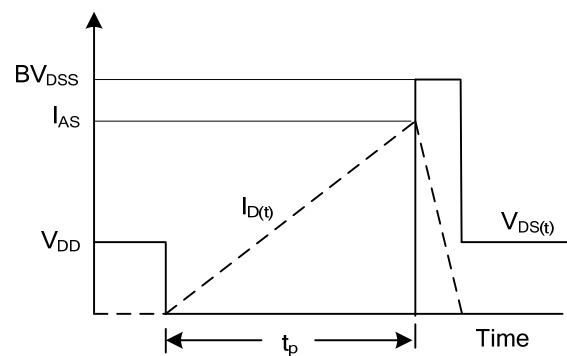
Gate Charge Test Circuit



Gate Charge Waveform



Unclamped Inductive Switching Test Circuit



Unclamped Inductive Switching Waveforms

UTC assumes no responsibility for equipment failures that result from using products at values that exceed, even momentarily, rated values (such as maximum ratings, operating condition ranges, or other parameters) listed in products specifications of any and all UTC products described or contained herein. UTC products are not designed for use in life support appliances, devices or systems where malfunction of these products can be reasonably expected to result in personal injury. Reproduction in whole or in part is prohibited without the prior written consent of the copyright owner. UTC reserves the right to make changes to information published in this document, including without limitation specifications and product descriptions, at any time and without notice. This document supersedes and replaces all information supplied prior to the publication hereof.