



U74AHC2G126

CMOS IC

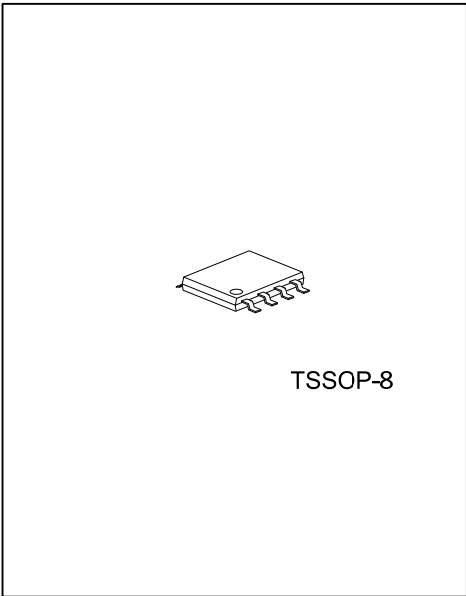
DUAL BUS BUFFER GATE WITH 3-STATE OUTPUTS

DESCRIPTION

The **U74AHC2G126** consists of two bus buffers with 3-state output controlled by enable input (nOE), when nOE is low, the output is disable.

FEATURES

- * Wide supply voltage range from 2.0V to 5.5V
- * Low static power consumption; $I_{CC}=2\mu A$ (Max.)
- * $\pm 8mA$ output driver at 5V

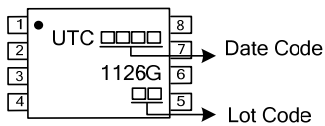


ORDERING INFORMATION

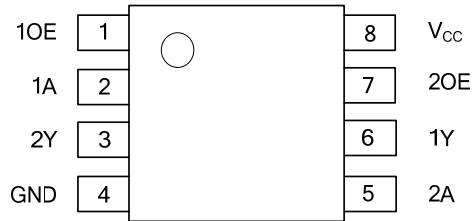
Ordering Number	Package	Packing
U74AHC2G126G-P08-R	TSSOP-8	Tape Reel

U74AHC2G126G-P08-R		
(1)Packing Type	(1) R: Tape Reel	
(2)Package Type	(2) P08: TSSOP-8	
(3)Green Package	(3) G: Halogen Free and Lead Free	

MARKING



■ PIN CONFIGURATION

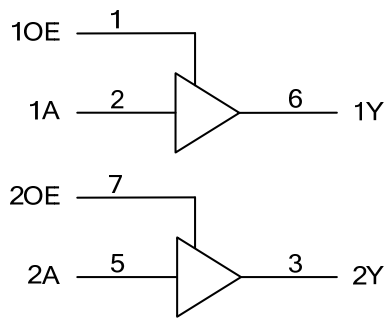


■ FUNCTION TABLE

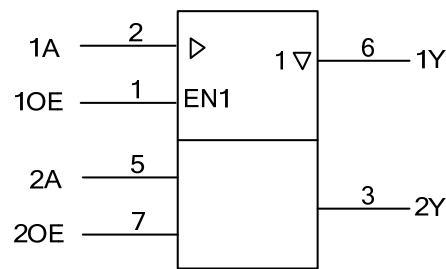
INPUT(OE)	INPUT(A)	OUTPUT(Y)
H	L	L
H	H	H
L	X	Z

Note: H: High voltage level; L: Low voltage level; Z: High impedance; X: Don't care

■ LOGIC DIAGRAM (positive logic)



Logic symbol



IEC Logic symbol

■ ABSOLUTE MAXIMUM RATING

PARAMETER	SYMBOL	CONDITIONS	RATINGS	UNIT
Supply Voltage	V_{CC}		-0.5 ~ +7.0	V
Input Voltage	V_{IN}		-0.5 ~ +7.0	V
Output Voltage	V_{OUT}		-0.5 ~ $V_{CC} + 0.5$	V
Continuous V_{CC} or GND Current	I_{CC}		50	mA
Continuous Output Current	I_{OUT}	$V_{OUT}=0V \sim V_{CC}$	± 25	mA
Input Clamp Current	I_{IK}	$V_{IN} < 0V$	-20	mA
Output Clamp Current	I_{OK}	$V_{OUT} > V_{CC}$ or $V_{OUT} < 0V$	± 20	mA
Storage Temperature Range	T_{STG}		-65 ~ +150	$^{\circ}C$

Note: Absolute maximum ratings are those values beyond which the device could be permanently damaged. Absolute maximum ratings are stress ratings only and functional device operation is not implied.

■ RECOMMENDED OPERATING CONDITIONS

PARAMETER	SYMBOL	TEST CONDITIONS	MIN	TYP	MAX	UNIT
Supply Voltage	V_{CC}	Operating	2.0		5.5	V
		Data retention only	1.5			V
Input Voltage	V_{IN}		0		5.5	V
Output Voltage	V_{OUT}	High or low state	0		V_{CC}	V
Operating Temperature (Note)	T_A		-40		125	$^{\circ}C$
Input Transition Rise or Fall Rate	$\Delta t/\Delta v$	$V_{CC}=3.3V \pm 0.3V$			100	ns/V
		$V_{CC}=5V \pm 0.5V$			20	ns/V

Note: This condition is only determined from design. It can't be 100% tested in mass production.

■ ELECTRICAL CHARACTERISTICS ($T_A = 25^{\circ}C$, unless otherwise specified)

PARAMETER	SYMBOL	TEST CONDITIONS	MIN	TYP	MAX	UNIT	
High-level Input Voltage	V_{IH}	$V_{CC}=2.0V$	1.5			V	
		$V_{CC}=3.0V$	2.1			V	
		$V_{CC}=5.5V$	3.85			V	
Low-level Input Voltage	V_{IL}	$V_{CC}=2.0V$			0.5	V	
		$V_{CC}=3.0V$			0.9	V	
		$V_{CC}=5.5V$			1.65	V	
High-Level Output Voltage	V_{OH}	$V_{CC}=2.0V$	1.9	2		V	
		$V_{CC}=3.0V$			2.9	3	V
		$V_{CC}=4.5V$			4.4	4.5	V
		$V_{CC}=3.0V, I_{OH}=-4mA$	2.58		V		
		$V_{CC}=4.5V, I_{OH}=-8mA$	3.94		V		
Low-Level Output Voltage	V_{OL}	$V_{CC}=2.0V$			0.1	V	
		$V_{CC}=3.0V$			0.1	V	
		$V_{CC}=4.5V$			0.1	V	
		$V_{CC}=3.0V, I_{OH}=-4mA$		0.36	V		
		$V_{CC}=4.5V, I_{OH}=-8mA$		0.36	V		
Input Leakage Current	$I_{I(LEAK)}$	$V_{CC}=5.5V, V_{IN}=V_{CC}$ or GND			± 0.1	μA	
3-state Output OFF-state Current	I_{OZ}	$V_{IN}=V_{IH}$ or $V_{IL}, V_{OUT}=V_{CC}$ or GND, $V_{CC}=5.5V$			± 0.25	μA	
Quiescent Supply Current	I_{CC}	$V_{CC}=5.5V, V_{IN}=V_{CC}$ or GND, $I_{OUT}=0A$			2	μA	
Input Capacitance	C_I	$V_{CC}=5.0V, V_{IN}=V_{CC}$ or GND		2		pF	

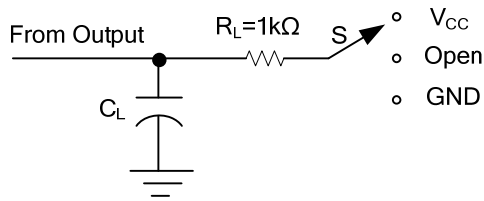
■ SWITCHING CHARACTERISTICS (T_A =25°C , unless otherwise specified)

PARAMETER	SYMBOL	TEST CONDITIONS	MIN	TYP	MAX	UNIT
Propagation delay from input (A) to output(Y)	t _{PD}	C _L =15pF	V _{CC} =3.3±0.3V		9.5	ns
			V _{CC} =5±0.5V		6.5	ns
		C _L =50pF	V _{CC} =3.3±0.3V		13	ns
			V _{CC} =5±0.5V		8.5	ns
Propagation delay from input (OE) to output(Y)	t _{en}	C _L =15pF	V _{CC} =3.3±0.3V		9.5	ns
			V _{CC} =5±0.5V		6	ns
		C _L =50pF	V _{CC} =3.3±0.3V		13	ns
			V _{CC} =5±0.5V		8	ns
Propagation delay from input (OE) to output(Y)	t _{dis}	C _L =15pF	V _{CC} =3.3±0.3V		11.5	ns
			V _{CC} =5±0.5V		8	ns
		C _L =50pF	V _{CC} =3.3±0.3V		15	ns
			V _{CC} =5±0.5V		10	ns

■ OPERATING CHARACTERISTICS (f=10MHz, T_A =25°C , unless otherwise specified)

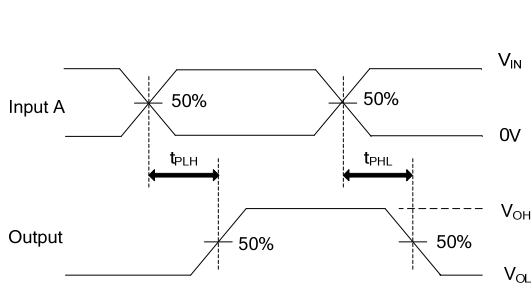
PARAMETER	SYMBOL	TEST CONDITIONS	MIN	TYP	MAX	UNIT
Power Dissipation Capacitance	C _{PD}	V _{CC} =5V, No load.		14		pF

■ TEST CIRCUIT AND WAVEFORMS

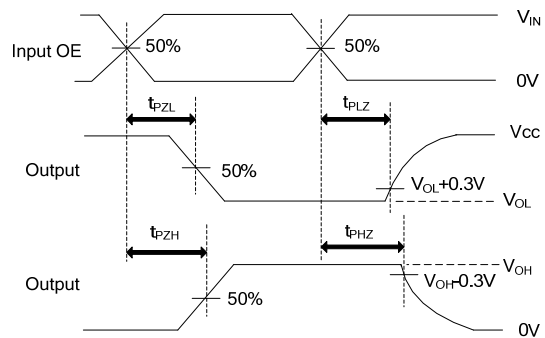


TEST CIRCUIT

TEST	S
t_{PLH}/t_{PHL}	Open
t_{PLZ}/t_{PZL}	V_{CC}
t_{PHZ}/t_{PZH}	GND



PROPAGATION DELAY TIMES



ENABLE AND DISABLE TIMES

Notes: 1. C_L includes probe and jig capacitance.

2. All input pulses are supplied by generators having the following characteristics: PRR ≤ 10 MHz, $Z_O = 50\Omega$.

UTC assumes no responsibility for equipment failures that result from using products at values that exceed, even momentarily, rated values (such as maximum ratings, operating condition ranges, or other parameters) listed in products specifications of any and all UTC products described or contained herein. UTC products are not designed for use in life support appliances, devices or systems where malfunction of these products can be reasonably expected to result in personal injury. Reproduction in whole or in part is prohibited without the prior written consent of the copyright owner. The information presented in this document does not form part of any quotation or contract, is believed to be accurate and reliable and may be changed without notice.