



U74LVC2G17

CMOS IC

DUAL SCHMITT-TRIGGER BUFFER

DESCRIPTION

The UTC **U74LVC2G17** is a high-performance, low-power, low-voltage, Si-gate CMOS device which provides two independent buffers with Schmitt trigger action. It is capable of transforming slowly changed input signals into sharply defined, jitter-free output signals.

FEATURES

- * Operate From 1.65V to 5.5V
- * 5 V tolerant input/output for interfacing with 5 V logic
- * ±24mA output drive (V_{CC} = 3.3V)
- * CMOS low-power consumption and high noise immunity
- * I_{OFF} Supports Partial-Power-Down Mode Operation
- * Latch-up performance exceeds 100mA
- * Specified from -40 °C to +85 °C

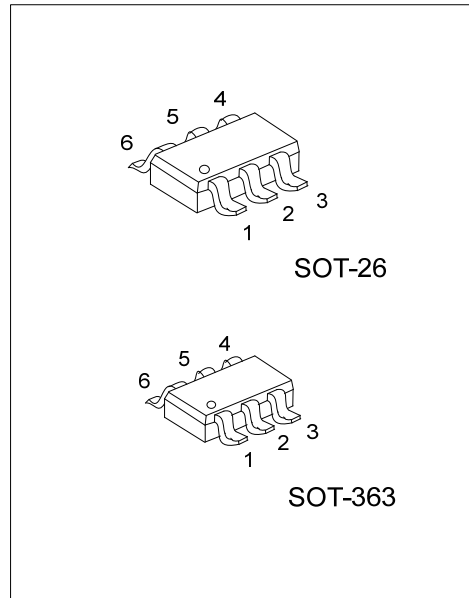
ORDERING INFORMATION

Ordering Number		Package	Packing
Lead Free	Halogen Free		
U74LVC2G17L-AG6-R	U74LVC2G17G-AG6-R	SOT-26	Tape Reel
U74LVC2G17L-AL6-R	U74LVC2G17G-AL6-R	SOT-363	Tape Reel

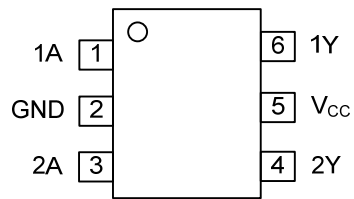
<p>U74LVC2G17G-AG6-R</p> <p>(1) Packing Type (2) Package Type (3) Green Package</p>	<p>(1) R: Tape Reel (2) AG6: SOT-26, AL6: SOT-363 (3) G: Halogen Free and Lead Free, L: Lead Free</p>
---	---

MARKING

SOT-26	SOT-363
<p>L: Lead Free G: Halogen Free</p>	<p>L: Lead Free G: Halogen Free</p>



■ PIN CONFIGURATION



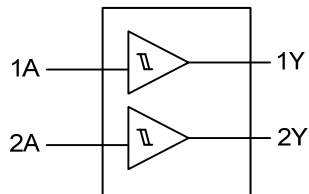
■ FUNCTION TABLE

INPUT(A)	OUTPUT(Y)
L	L
H	H

H=High Level

L=Low Level

■ LOGIC SYMBOL



■ ABSOLUTE MAXIMUM RATING

PARAMETER	SYMBOL	RATINGS	UNIT
Supply Voltage	V_{CC}	-0.5~6.5	V
Input Voltage (Note 2)	V_{IN}	-0.5~6.5	V
Output Voltage (Note 2,3)	High-Impedance	-0.5~6.5	V
	Power-Off State		
	High State	-0.5~ $V_{CC}+0.5$	V
	Low State		
Input Clamp Current ($V_{IN}<0$)	I_{IK}	-50	mA
Output Clamp Current ($V_{OUT}<0$)	I_{OK}	-50	mA
Output Current	I_{OUT}	± 50	mA
V_{CC} or GND Current	I_{CC}	± 100	mA
Junction Temperature	T_J	150	$^{\circ}C$
Storage Temperature	T_{STG}	-65 ~ +150	$^{\circ}C$

- Notes: 1. Absolute maximum ratings are those values beyond which the device could be permanently damaged. Absolute maximum ratings are stress ratings only and functional device operation is not implied.
 2. The input negative-voltage and output voltage ratings may be exceeded if the input and output current ratings are observed.
 3. The value of V_{CC} is provided in the recommended operating conditions table.

■ RECOMMENDED OPERATING CONDITIONS

PARAMETER	SYMBOL	TEST CONDITIONS	MIN	TYP	MAX	UNIT
Supply Voltage	V_{CC}	Operating	1.65		5.5	V
Input Voltage	V_{IN}		0		5.5	V
Output Voltage	V_{OUT}	High or low state	0		V_{CC}	V
High-Level Input Voltage	V_{T+}	$V_{CC} = 1.65\text{ V}$	0.70		1.40	V
		$V_{CC} = 2.3\text{ V}$	1.00		1.70	V
		$V_{CC} = 3.0\text{ V}$	1.30		2.20	V
		$V_{CC} = 4.5\text{ V}$	1.90		3.10	V
		$V_{CC} = 5.5\text{ V}$	2.20		3.70	V
Low-Level Input Voltage	V_{T-}	$V_{CC} = 1.65\text{ V}$	0.30		0.70	V
		$V_{CC} = 2.3\text{ V}$	0.40		1.00	V
		$V_{CC} = 3.0\text{ V}$	0.60		1.30	V
		$V_{CC} = 4.5\text{ V}$	1.10		2.00	V
		$V_{CC} = 5.5\text{ V}$	1.40		2.50	V
Hysteresis Voltage	ΔV_T	$V_{CC} = 1.65\text{ V}$	0.30		0.80	V
		$V_{CC} = 2.3\text{ V}$	0.40		0.90	V
		$V_{CC} = 3.0\text{ V}$	0.40		1.10	V
		$V_{CC} = 4.5\text{ V}$	0.60		1.30	V
		$V_{CC} = 5.5\text{ V}$	0.70		1.40	V
Operating Temperature	T_a		-40		85	$^{\circ}C$

Note: All unused inputs of the device must be held at V_{CC} or GND to ensure proper device operation.

■ ELECTRICAL CHARACTERISTICS ($V_{CC}=3.3V$, $T_a=25^{\circ}C$, unless otherwise specified)

PARAMETER	SYMBOL	TEST CONDITIONS	MIN	TYP	MAX	UNIT
High-Level Output Voltage	V_{OH}	$V_{CC} = 1.65V \sim 5.5V$, $I_{OH} = -100\mu A$	$V_{CC} - 0.1$			V
		$V_{CC} = 1.65V$, $I_{OH} = -4mA$	1.20			V
		$V_{CC} = 2.3V$, $I_{OH} = -8mA$	1.90			V
		$V_{CC} = 3.0V$, $I_{OH} = -16mA$	2.40			V
		$V_{CC} = 3.0V$, $I_{OH} = -24mA$	2.30			V
		$V_{CC} = 4.5V$, $I_{OH} = -32mA$	3.80			V
Low-Level Output Voltage	V_{OL}	$V_{CC} = 1.65 \sim 5.5V$, $I_{OI} = 100\mu A$			0.10	V
		$V_{CC} = 1.65V$, $I_{OI} = 4mA$			0.45	V
		$V_{CC} = 2.3V$, $I_{OI} = 8mA$			0.30	V
		$V_{CC} = 3.0V$, $I_{OI} = 16mA$			0.40	V
		$V_{CC} = 3.0V$, $I_{OI} = 24mA$			0.55	V
		$V_{CC} = 4.5V$, $I_{OI} = 32mA$			0.55	V
Input Leakage Current	$I_{I(LEAK)}$	$V_{IN} = 0$ to $5.5V$, $V_{CC} = 0 \sim 5.5V$			± 5	μA
Power OFF Leakage Current	I_{OFF}	V_{IN} or $V_{OUT} = 5.5V$, $V_{CC} = 0$			± 10	μA
Quiescent Supply Current	I_{CC}	$V_{IN} = V_{CC}$ or GND , $I_{OUT} = 0$ $V_{CC} = 1.65 \sim 5.5V$			10	μA
Additional Quiescent Supply Current	ΔI_{CC}	One input at $V_{CC} - 0.6V$ Other inputs at V_{CC} or GND , $I_{OUT} = 0$, $V_{CC} = 3 \sim 5.5V$			500	μA
Input Capacitance	C_I	$V_{IN} = V_{CC}$ or GND , $V_{CC} = 3.3V$		4		pF

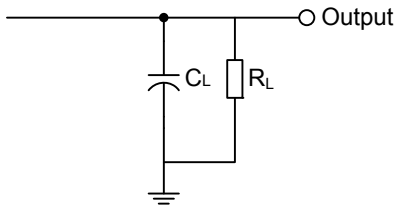
■ SWITCHING CHARACTERISTICS (see TEST CIRCUIT AND WAVEFORMS)

PARAMETER	SYMBOL	TEST CONDITIONS	MIN	TYP	MAX	UNIT
Propagation delay nA to nY	t_{PLH} t_{PHL}	$V_{CC} = 1.8V \pm 0.15V$, $C_L = 30pF$, $R_L = 1K\Omega$	3.9		9.3	ns
		$V_{CC} = 2.5V \pm 0.2V$, $C_L = 30pF$, $R_L = 500\Omega$	1.9		5.7	ns
		$V_{CC} = 3.3V \pm 0.3V$, $C_L = 50pF$, $R_L = 500\Omega$	2.2		5.4	ns
		$V_{CC} = 5V \pm 0.5V$, $C_L = 50pF$, $R_L = 500\Omega$	1.5		4.3	ns

■ OPERATING CHARACTERISTICS ($T_a=25^{\circ}C$)

PARAMETER	SYMBOL	TEST CONDITIONS	MIN	TYP	MAX	UNIT
Power Dissipation Capacitance	C_{pd}	$V_{CC} = 5V$, $f = 10MHz$		21		pF

■ TEST CIRCUITS AND WAVEFORMS

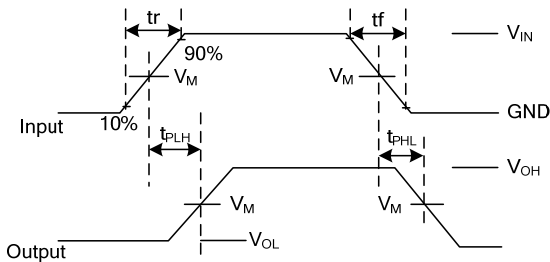


V_{CC}	V_{IN}	t_R, t_F	V_M	C_L	R_L
1.65V~1.95V	V_{CC}	$\leq 2ns$	$V_{CC}/2$	30pF	1k Ω
2.3V~2.7V	V_{CC}	$\leq 2ns$	$V_{CC}/2$	30pF	500 Ω
3.0V~3.6V	3V	$\leq 2.5ns$	1.5V	50pF	500 Ω
4.5V~5.5V	V_{CC}	$\leq 2.5ns$	$V_{CC}/2$	50pF	500 Ω

Definitions for test circuit:

R_L = Load resistance.

C_L = Load capacitance including jig and probe capacitance.



Notes: 1. V_{OL} and V_{OH} are typical output drop that occur with the output load.

2. t_{PLH} and t_{PHL} are the same as t_{PD} .

UTC assumes no responsibility for equipment failures that result from using products at values that exceed, even momentarily, rated values (such as maximum ratings, operating condition ranges, or other parameters) listed in products specifications of any and all UTC products described or contained herein. UTC products are not designed for use in life support appliances, devices or systems where malfunction of these products can be reasonably expected to result in personal injury. Reproduction in whole or in part is prohibited without the prior written consent of the copyright owner. The information presented in this document does not form part of any quotation or contract, is believed to be accurate and reliable and may be changed without notice.