



U74LVC3G34

CMOS IC

TRIPLE BUFFER GATE

DESCRIPTION

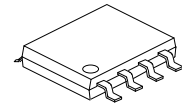
The **U74LVC3G34** is a triple buffer gate which provides the Boolean function $Y = A$.

The **U74LVC3G34** inputs can be driven from either 3.3 V or 5 V devices.

The **U74LVC3G34** IOFF circuitry disables the output, preventing a damaging backflow current through the device when it is powered down.

FEATURES

- * Wide supply voltage range from 1.65V to 5.5V
- * Inputs accept voltages up to 5.5V
- * I_{OFF} supports partial-power-down mode
- * Low static power consumption; I_{CC}=10μA (Max.)



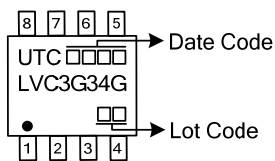
SOP-8

ORDERING INFORMATION

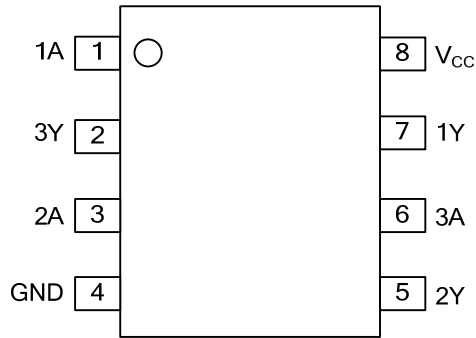
Ordering Number	Package	Packing
U74LVC3G34G-S08-R	SOP-8	Tape Reel

<p>U74LVC3G34G-S08-R</p> <p>(1) Packing Type</p> <p>(2) Package Type</p> <p>(3) Green Package</p>	<p>(1) R: Tape Reel</p> <p>(2) S08: SOP-8</p> <p>(3) G: Halogen Free and Lead Free</p>
---	--

MARKING



■ PIN CONFIGURATION

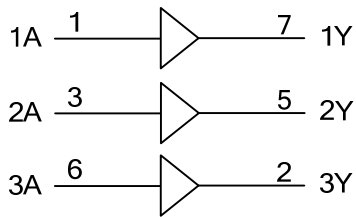


■ FUNCTION TABLE

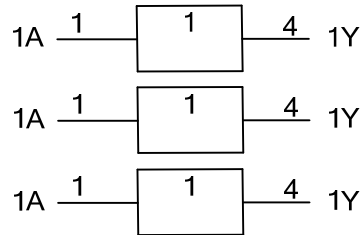
INPUT(A)	OUTPUT(Y)
H	H
L	L

Note: H: HIGH voltage level; L: LOW voltage level.

■ LOGIC DIAGRAM (positive logic)



Logic symbol



IEC logic symbol

■ ABSOLUTE MAXIMUM RATING

PARAMETER	SYMBOL	CONDITIONS	RATINGS	UNIT
Supply Voltage	V_{CC}		-0.5 ~ +6.5	V
Input Voltage	V_{IN}		-0.5 ~ +6.5	V
Output Voltage	V_{OUT}	Output in the high or low state	-0.5 ~ $V_{CC} + 0.5$	V
		Output in the power-off state	-0.5 ~ +6.5	V
Continuous V_{CC} or GND Current	I_{CC}		±100	mA
Continuous Output Current	I_{OUT}	$V_{OUT}=0 \sim V_{CC}$	±50	mA
Input Clamp Current	I_{IK}	$V_{IN} < 0$	-50	mA
Output Clamp Current	I_{OK}	$V_O > V_{CC}$ or $V_{OUT} < 0$	-50	mA
Storage Temperature Range	T_{STG}		-65 ~ +150	°C

Note: Absolute maximum ratings are those values beyond which the device could be permanently damaged. Absolute maximum ratings are stress ratings only and functional device operation is not implied.

■ RECOMMENDED OPERATING CONDITIONS

PARAMETER	SYMBOL	TEST CONDITIONS	MIN	TYP	MAX	UNIT
Supply Voltage	V_{CC}	Operating	1.65		5.5	V
		Data retention only	1.5			V
Input Voltage	V_{IN}		0		5.5	V
Output Voltage	V_{OUT}	High or low state	0		V_{CC}	V
Operating Temperature	T_A		-40		85	°C
Input Transition Rise or Fall Rate	$\Delta t/\Delta v$	$V_{CC}=1.8V \pm 0.15V, 2.5V \pm 0.2V$			20	ns/V
		$V_{CC}=3.3V \pm 0.3V$			10	ns/V
		$V_{CC}=5V \pm 0.5V$			5	ns/V

■ ELECTRICAL CHARACTERISTICS ($T_A = 25^\circ\text{C}$, unless otherwise specified)

PARAMETER	SYMBOL	TEST CONDITIONS	MIN	TYP	MAX	UNIT	
High-level Input Voltage	V_{IH}	$V_{CC}=1.65V \sim 1.95V$	$0.65 \times V_{CC}$			V	
		$V_{CC}=2.3V$ to $2.7V$	1.7			V	
		$V_{CC}=3V$ to $3.6V$	2			V	
		$V_{CC}=4.5V$ to $5.5V$	$0.7 \times V_{CC}$			V	
Low-level Input Voltage	V_{IL}	$V_{CC}=1.65V \sim 1.95V$			$0.35 \times V_{CC}$	V	
		$V_{CC}=2.3V$ to $2.7V$			0.7	V	
		$V_{CC}=3V$ to $3.6V$			0.8	V	
		$V_{CC}=4.5V$ to $5.5V$			$0.3 \times V_{CC}$	V	
High-Level Output Voltage	V_{OH}	$V_{CC}=1.65 \sim 5.5V, I_{OH}=-100\mu A$	$V_{CC}-0.1$			V	
		$V_{CC}=1.65V, I_{OH}=-4mA$	1.2			V	
		$V_{CC}=2.3V, I_{OH}=-8mA$	1.9			V	
		$V_{CC}=3.0V$	$I_{OH}=-16mA$	2.4			V
			$I_{OH}=-24mA$	2.3			V
		$V_{CC}=4.5V, I_{OH}=-32mA$	3.8			V	
Low-Level Output Voltage	V_{OL}	$V_{CC}=1.65 \sim 5.5V, I_{OH}=-100\mu A$			0.1	V	
		$V_{CC}=1.65V, I_{OH}=-4mA$			0.45	V	
		$V_{CC}=2.3V, I_{OH}=-8mA$			0.3	V	
		$V_{CC}=3.0V$	$I_{OH}=-16mA$			0.4	V
			$I_{OH}=-24mA$			0.55	V
		$V_{CC}=4.5V, I_{OH}=-32mA$			0.55	V	

■ ELECTRICAL CHARACTERISTICS (Cont.)

PARAMETER	SYMBOL	TEST CONDITIONS	MIN	TYP	MAX	UNIT
Input Leakage Current	$I_{I(LEAK)}$	$V_{CC}=0$ to 5.5V, $V_{IN}=5.5V$ or GND			±5	μA
Power OFF Leakage Current	I_{off}	$V_{CC}=0V$, V_{IN} or $V_{OUT}=5.5V$			±10	μA
Quiescent Supply Current	I_{CC}	$V_{CC}=1.65 \sim 5.5V$, $V_{IN}=V_{CC}$ or GND, $I_{OUT}=0$			10	μA
Additional Quiescent Supply Current Per Input Pin	ΔI_{CC}	$V_{CC}=3$ to 5.5V, One input at $V_{CC}-0.6V$, Other inputs at V_{CC} or GND			500	μA
Input Capacitance	C_I	$V_{CC}=3.3V$, $V_{IN}=V_{CC}$ or GND		6		pF

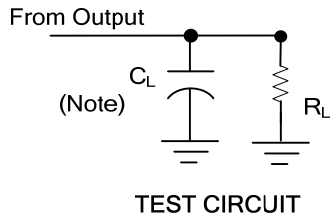
■ SWITCHING CHARACTERISTICS ($T_A = 25^\circ C$, unless otherwise specified)

PARAMETER	SYMBOL	TEST CONDITIONS	MIN	TYP	MAX	UNIT
Propagation delay from input (A or B) to output(Y)	t_{PLH} / t_{PHL}	$V_{CC}=1.8 \pm 0.15V$, $C_L=30pF$, $R_L=1000\Omega$	3.2		7.9	ns
		$V_{CC}=2.5 \pm 0.2V$, $C_L=30pF$, $R_L=500\Omega$	1.5		4.4	ns
		$V_{CC}=3.3 \pm 0.3V$, $C_L=50pF$, $R_L=500\Omega$	1.4		4.1	ns
		$V_{CC}=5 \pm 0.5V$, $C_L=50pF$, $R_L=500\Omega$	1.1		3.2	ns

■ OPERATING CHARACTERISTICS ($f=10MHz$, $T_A = 25^\circ C$, unless otherwise specified)

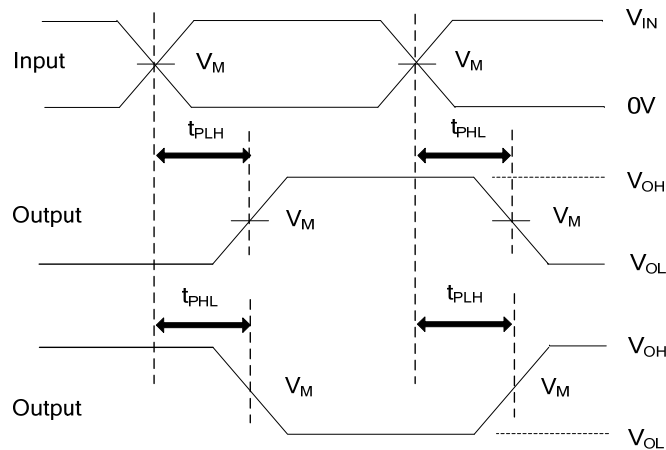
PARAMETER	SYMBOL	TEST CONDITIONS	MIN	TYP	MAX	UNIT
Power Dissipation Capacitance	C_{PD}	$V_{CC}=1.8V$		19		pF
		$V_{CC}=2.5V$		19		pF
		$V_{CC}=3.3V$		19		pF
		$V_{CC}=5V$		21		pF

■ TEST CIRCUIT AND WAVEFORMS



Note: C_L includes probe and jig capacitance.

V_{CC}	V_{IN}	t_R / t_F	V_M	C_L	R_L
$1.8V \pm 0.15V$	V_{CC}	$\leq 2ns$	$V_{CC}/2$	30pF	1K Ω
$2.5V \pm 0.2V$	V_{CC}	$\leq 2ns$	$V_{CC}/2$	30pF	500 Ω
$3.3V \pm 0.3V$	3V	$\leq 2.5ns$	1.5V	50pF	500 Ω
$5V \pm 0.5V$	V_{CC}	$\leq 2.5ns$	$V_{CC}/2$	50pF	500 Ω



PROPAGATION DELAY TIMES

- Notes: 1. C_L includes probe and jig capacitance.
 2. All input pulses are supplied by generators having the following characteristics: PRR $\leq 10MHz$, $Z_O = 50\Omega$.

UTC assumes no responsibility for equipment failures that result from using products at values that exceed, even momentarily, rated values (such as maximum ratings, operating condition ranges, or other parameters) listed in products specifications of any and all UTC products described or contained herein. UTC products are not designed for use in life support appliances, devices or systems where malfunction of these products can be reasonably expected to result in personal injury. Reproduction in whole or in part is prohibited without the prior written consent of the copyright owner. The information presented in this document does not form part of any quotation or contract, is believed to be accurate and reliable and may be changed without notice.