



## U74LVC2G17

CMOS IC

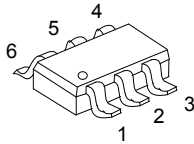
### DUAL SCHMITT-TRIGGER BUFFER

#### DESCRIPTION

The UTC **U74LVC2G17** is a high-performance, low-power, low-voltage, Si-gate CMOS device which provides two independent buffers with Schmitt trigger action. It is capable of transforming slowly changed input signals into sharply defined, jitter-free output signals.

#### FEATURES

- \* Operate From 1.65V to 5.5V
- \* 5 V tolerant input/output for interfacing with 5 V logic
- \*  $\pm 24\text{mA}$  output drive ( $V_{CC} = 3.3\text{V}$ )
- \* CMOS low-power consumption and high noise immunity
- \*  $I_{OFF}$  Supports Partial-Power-Down Mode Operation
- \* Latch-up performance exceeds 100mA
- \* Specified from  $-40\text{ }^{\circ}\text{C}$  to  $+85\text{ }^{\circ}\text{C}$
- \* Halogen Free



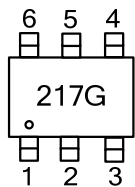
SOT-363

#### ORDERING INFORMATION

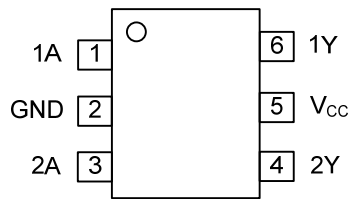
Ordering Number	Package	Packing
U74LVC2G17G-AL6-R	SOT-363	Tape Reel

	U74LVC2G17G-AL6-R	(1) R: Tape Reel
	(1) Packing Type	(2) AL6: SOT-363
	(2) Package Type	(3) G: Halogen Free
	(3) Halogen Free	

#### MARKING



## ■ PIN CONFIGURATION



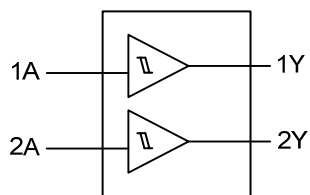
## ■ FUNCTION TABLE

INPUT(A)	OUTPUT(Y)
L	L
H	H

H=High level

L=Low Level

## ■ LOGIC SYMBOL



## ■ ABSOLUTE MAXIMUM RATING

PARAMETER	SYMBOL	RATINGS	UNIT
Supply Voltage	$V_{CC}$	-0.5~6.5	V
Input Voltage (Note 2)	$V_{IN}$	-0.5~6.5	V
Output Voltage (Note 2,3)	High-Impedance	-0.5~6.5	V
	Power-Off State		
	High State	-0.5~ $V_{CC}+0.5$	V
	Low State		
Input Clamp Current ( $V_{IN}<0$ )	$I_{IK}$	-50	mA
Output Clamp Current ( $V_{OUT}<0$ )	$I_{OK}$	-50	mA
Output Current	$I_{OUT}$	$\pm 50$	mA
$V_{CC}$ or GND Current	$I_{CC}$	$\pm 100$	mA
Junction Temperature	$T_J$	150	$^{\circ}C$
Storage Temperature	$T_{STG}$	-65 ~ +150	$^{\circ}C$

- Notes: 1. Absolute maximum ratings are those values beyond which the device could be permanently damaged. Absolute maximum ratings are stress ratings only and functional device operation is not implied.
2. The input negative-voltage and output voltage ratings may be exceeded if the input and output current ratings are observed.
3. The value of  $V_{CC}$  is provided in the recommended operating conditions table.

## ■ RECOMMENDED OPERATING CONDITIONS

PARAMETER	SYMBOL	TEST CONDITIONS	MIN	TYP	MAX	UNIT
Supply Voltage	$V_{CC}$	Operating	1.65		5.5	V
Input Voltage	$V_{IN}$		0		5.5	V
Output Voltage	$V_{OUT}$	High or low state	0		$V_{CC}$	V
High-Level Input Voltage	$V_{T+}$	$V_{CC} = 1.65\text{ V}$	0.70		1.40	V
		$V_{CC} = 2.3\text{ V}$	1.00		1.70	V
		$V_{CC} = 3.0\text{ V}$	1.30		2.20	V
		$V_{CC} = 4.5\text{ V}$	1.90		3.10	V
		$V_{CC} = 5.5\text{ V}$	2.20		3.70	V
Low-Level Input Voltage	$V_{T-}$	$V_{CC} = 1.65\text{ V}$	0.30		0.70	V
		$V_{CC} = 2.3\text{ V}$	0.40		1.00	V
		$V_{CC} = 3.0\text{ V}$	0.60		1.30	V
		$V_{CC} = 4.5\text{ V}$	1.10		2.00	V
		$V_{CC} = 5.5\text{ V}$	1.40		2.50	V
Hysteresis Voltage	$\Delta V_T$	$V_{CC} = 1.65\text{ V}$	0.30		0.80	V
		$V_{CC} = 2.3\text{ V}$	0.40		0.90	V
		$V_{CC} = 3.0\text{ V}$	0.40		1.10	V
		$V_{CC} = 4.5\text{ V}$	0.60		1.30	V
		$V_{CC} = 5.5\text{ V}$	0.70		1.40	V
Operating Temperature	$T_a$		-40		85	$^{\circ}C$

Note: All unused inputs of the device must be held at  $V_{CC}$  or GND to ensure proper device operation.

■ ELECTRICAL CHARACTERISTICS ( $V_{CC}=3.3V$ ,  $T_a=25^{\circ}C$ , unless otherwise specified)

PARAMETER	SYMBOL	TEST CONDITIONS	MIN	TYP	MAX	UNIT
High-Level Output Voltage	$V_{OH}$	$V_{CC} = 1.65V \sim 5.5V$ , $I_{OH} = -100\mu A$	$V_{CC} - 0.1$			V
		$V_{CC} = 1.65V$ , $I_{OH} = -4mA$	1.20			V
		$V_{CC} = 2.3V$ , $I_{OH} = -8mA$	1.90			V
		$V_{CC} = 3.0V$ , $I_{OH} = -16mA$	2.40			V
		$V_{CC} = 3.0V$ , $I_{OH} = -24mA$	2.30			V
		$V_{CC} = 4.5V$ , $I_{OH} = -32mA$	3.80			V
Low-Level Output Voltage	$V_{OL}$	$V_{CC} = 1.65 \sim 5.5V$ , $I_{OI} = 100\mu A$			0.10	V
		$V_{CC} = 1.65V$ , $I_{OI} = 4mA$			0.45	V
		$V_{CC} = 2.3V$ , $I_{OI} = 8mA$			0.30	V
		$V_{CC} = 3.0V$ , $I_{OI} = 16mA$			0.40	V
		$V_{CC} = 3.0V$ , $I_{OI} = 24mA$			0.55	V
		$V_{CC} = 4.5V$ , $I_{OI} = 32mA$			0.55	V
Input Leakage Current	$I_{I(LEAK)}$	$V_{IN} = 0$ to $5.5V$ , $V_{CC} = 0 \sim 5.5V$			$\pm 5$	$\mu A$
Power OFF Leakage Current	$I_{OFF}$	$V_{IN}$ or $V_{OUT} = 5.5V$ , $V_{CC} = 0$			$\pm 10$	$\mu A$
Quiescent Supply Current	$I_{CC}$	$V_{IN} = V_{CC}$ or GND, $I_{OUT} = 0$ $V_{CC} = 1.65 \sim 5.5V$			10	$\mu A$
Additional Quiescent Supply Current	$\Delta I_{CC}$	One input at $V_{CC} - 0.6V$ Other inputs at $V_{CC}$ or GND, $I_{OUT} = 0$ , $V_{CC} = 3 \sim 5.5V$			500	$\mu A$
Input Capacitance	$C_I$	$V_{IN} = V_{CC}$ or GND, $V_{CC} = 3.3V$		4		pF

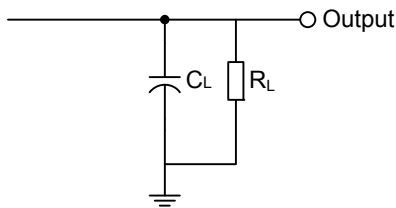
■ SWITCHING CHARACTERISTICS (see TEST CIRCUIT AND WAVEFORMS)

PARAMETER	SYMBOL	TEST CONDITIONS	MIN	TYP	MAX	UNIT
Propagation delay nA to nY	$t_{PLH}$ $t_{PHL}$	$V_{CC} = 1.8V \pm 0.15V$ , $C_L = 30pF$ , $R_L = 1K\Omega$	3.9		9.3	ns
		$V_{CC} = 2.5V \pm 0.2V$ , $C_L = 30pF$ , $R_L = 500\Omega$	1.9		5.7	ns
		$V_{CC} = 3.3V \pm 0.3V$ , $C_L = 50pF$ , $R_L = 500\Omega$	2.2		5.4	ns
		$V_{CC} = 5V \pm 0.5V$ , $C_L = 50pF$ , $R_L = 500\Omega$	1.5		4.3	ns

■ OPERATING CHARACTERISTICS ( $T_a=25^{\circ}C$ )

PARAMETER	SYMBOL	TEST CONDITIONS	MIN	TYP	MAX	UNIT
Power Dissipation Capacitance	$C_{pd}$	$V_{CC} = 5V$ , $f = 10MHz$		21		pF

■ TEST CIRCUITS AND WAVEFORMS

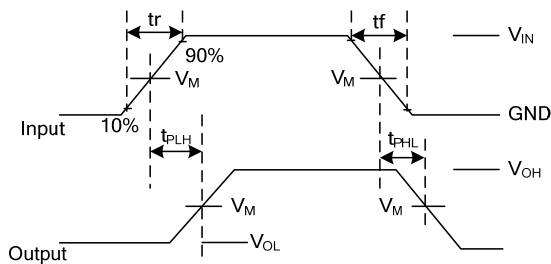


$V_{CC}$	$V_{IN}$	$t_R, t_F$	$V_M$	$C_L$	$R_L$
1.65V~1.95V	$V_{CC}$	$\leq 2ns$	$V_{CC}/2$	30pF	1k $\Omega$
2.3V~2.7V	$V_{CC}$	$\leq 2ns$	$V_{CC}/2$	30pF	500 $\Omega$
3.0V~3.6V	3V	$\leq 2.5ns$	1.5V	50pF	500 $\Omega$
4.5V~5.5V	$V_{CC}$	$\leq 2.5ns$	$V_{CC}/2$	50pF	500 $\Omega$

Definitions for test circuit:

$R_L$  = Load resistance.

$C_L$  = Load capacitance including jig and probe capacitance.



- Notes: 1.  $V_{OL}$  and  $V_{OH}$  are typical output drop that occur with the output load.  
 2.  $t_{PLH}$  and  $t_{PHL}$  are the same as  $t_{pd}$ .

UTC assumes no responsibility for equipment failures that result from using products at values that exceed, even momentarily, rated values (such as maximum ratings, operating condition ranges, or other parameters) listed in products specifications of any and all UTC products described or contained herein. UTC products are not designed for use in life support appliances, devices or systems where malfunction of these products can be reasonably expected to result in personal injury. Reproduction in whole or in part is prohibited without the prior written consent of the copyright owner. The information presented in this document does not form part of any quotation or contract, is believed to be accurate and reliable and may be changed without notice.